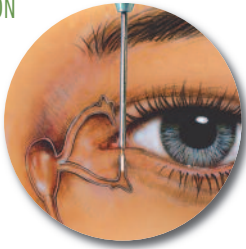


OASIS 
DRY EYE PRODUCTS

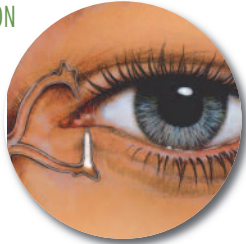
FORM FIT®

Hydrogel Intracanalicular Plug

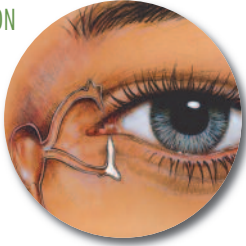
INSERTION



IMMEDIATELY AFTER INSERTION

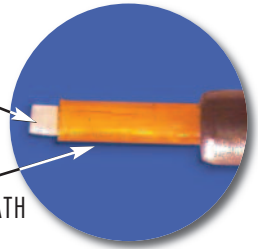


10 MINUTES AFTER INSERTION



HYDROGEL PLUG

POLYIMIDE SHEATH



Patent # 5,116,37

Form Fit® is a one size, one solution plug. Once inserted into the punctum, when the plug comes in contact with tear film it increases in size as it hydrates until it completely fills the vertical canalicular cavity to form a perfect fit. In the hydrated state, the plug is a soft, pliable, gelatinous material.

Form Fit® comes sterile, preloaded in an inserter. The polyimide sheath is inserted into the punctum and the inserter handle compressed to expel the hydrogel plug.

To remove the Form Fit® plug, simply flush saline solution through the punctal opening. The gelatinous material will be expressed through the nasal passage.

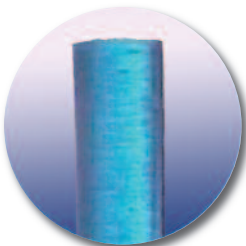
PRODUCT FEATURES

- In its dry state, the plug measures 0.3mm in diameter by 3.0 mm long
- The plug requires no special storage
- The need for punctal measurement has been eliminated
- Hydrogel is biocompatible and has no foreign body sensation

REF #	DESCRIPTION	QTY PER BOX
6303	Form Fit® Hydrogel Plugs	10 plugs
6303-T	Form Fit® Hydrogel Plugs	2 plugs

SOFT PLUG® Extended Duration Plugs

Extended Duration absorbable plugs are designed to provide patient comfort for up to 3 months. This long-lasting plug is effective and economical for transient dry eye symptoms following surgery. Extended Duration plugs are 2mm in length. Sterile.



REF #	DESCRIPTION	QTY PER BOX
6402	0.2mm Extended Duration Plugs	40
6402A	0.2mm Extended Duration Plugs	20
6403	0.3mm Extended Duration Plugs	40
6403A	0.3mm Extended Duration Plugs	20
6404	0.4mm Extended Duration Plugs	40
6404A	0.4mm Extended Duration Plugs	20
6405	0.5mm Extended Duration Plugs	40
6405A	0.5mm Extended Duration Plugs	20
6400V	Extended Duration Variety Pack (contains 1 pair 0.2mm, 3 pair 0.3mm, 4 pair 0.4mm and 2 pair 0.5mm)	20

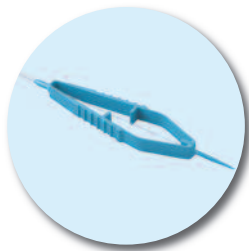


SOFT PLUG® Silicone Punctum Plugs

The distinctive low profile cap combined with a softer, more flexible silicone maximizes patient comfort. The pointed nose design simplifies insertion while the large anchor with wide shelf firmly secures the plugs. The inserter provides greater control and eliminates accidental release of the plug. Soft Plug silicone plugs are removable.

Available sterile, preloaded on inserter in 2-pack or 6-pack dispenser box.

Also available in sterile, non-loaded Economy Pack: Includes 2 inserters and 10 trays of 2 plugs each. Trays equipped with an alignment slot for quick loading.



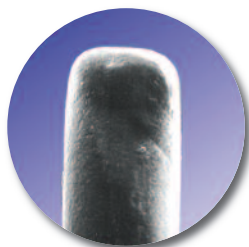
REF #	DESCRIPTION	QTY PER BOX
66610	SOFT PLUG Silicone, Micro 0.4mm	2
6610-D	SOFT PLUG Silicone, Micro 0.4mm Dispenser Box	6
6610-EP	SOFT PLUG Silicone, Micro 0.4mm Economy Pack	20
6611	SOFT PLUG Silicone, Mini 0.5mm	2
6611-D	SOFT PLUG Silicone, Mini 0.5mm Dispenser Box	6
6611-EP	SOFT PLUG Silicone, Mini 0.5mm Economy Pack	20
6612	SOFT PLUG Silicone, Petite 0.6mm	2
6612-D	SOFT PLUG Silicone, Petite 0.6mm Dispenser Box	6
6612-EP	SOFT PLUG Silicone, Petite 0.6mm Economy Pack	20
6613	SOFT PLUG Silicone, Small 0.7mm	2
6613-D	SOFT PLUG Silicone, Small 0.7mm Dispenser Box	6
6613-EP	SOFT PLUG Silicone, Small 0.7mm Economy Pack	20
6614	SOFT PLUG Silicone, Medium 0.8mm	2
6614-D	SOFT PLUG Silicone, Medium 0.8mm Dispenser Box	6
6614-EP	SOFT PLUG Silicone, Medium 0.8mm Economy Pack	20



SOFT PLUG® Flow Control Plugs

- For partial occlusion with limited tear drainage
- Sterile, Pre-loaded on inserter

REF #	DESCRIPTION	QTY PER BOX
6612-FC	SOFT PLUG Flow Control, Petite 0.6mm	2
6613-FC	SOFT PLUG Flow Control, Small 0.7mm	2



SOFT PLUG® Collagen Intracanalicular Plugs*

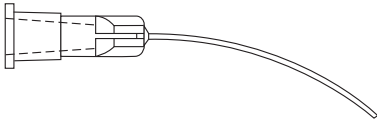
Smooth proprietary surface simplifies insertion of the plug. Ideal for short-term diagnostic occlusion; absorbable in 2 to 5 days. Sterile.

REF #	DESCRIPTION	QTY PER BOX
6502	SOFT PLUG Collagen, 0.2mm x 2mm long	60
6503	SOFT PLUG Collagen, 0.3mm x 2mm long	60
6504	SOFT PLUG Collagen, 0.4mm x 2mm long	60

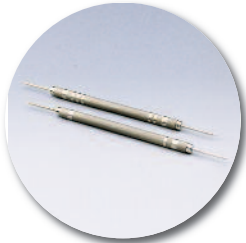
* Not CE approved

DRY EYE ACCESSORIES

Lacrimal Irrigation Kit



REF #	DESCRIPTION
4003-IK	Lacrimal Irrigation Kit Sterile Contents: One 3ml syringe and one 25g x 1-1/8" lacrimal cannula, curved, open end. For use with BSS to irrigate the Form Fit plug through the nasal passage if removal becomes necessary. 10 per box



SOFT PLUG® Gauge Set

For accurate sizing of the puncta before insertion of the plug. Sterile.

REF #	DESCRIPTION	SIZE
6625	Sizing Gauge	.5mm and .6mm tips
6627	Sizing Gauge	.7mm and .8mm tips
6630	Gauge Set	Includes both instruments and sterilization tray

Instruments

REF #	DESCRIPTION
6640	Castroviejo Lacrimal Dilator, Double End, sterile
6643	Jeweler's Forceps, Straight #3, sterile
6647	Jeweler's Forceps, Curved #7, sterile
6648	Grooved Forceps, sterile Application: Insertion of Extended Duration and Collagen Plugs

Providing the highest quality products for Cataract, Refractive and Dry Eye care

Also available from OASIS:

Premier Edge® Knives and Microkeratome Blades • Colvard Pupillometer
SOFT CELL® PVA Foam Products • Cannulas, Needles, Cystotomes
Disposable Bimanuals • Visco Shield® Viscoelastic



Glendora, CA

909.305.5400 ■ 909.305.9987 FAX
international@oasismedical.com
www.oasismedical.com

European Authorized Representative

Donawa Consulting Srl
Piazza Albania 10
00153 Rome, Italy



ISO 13485:2003

CM006E 4/09